

## IQIC

*Chilled beam for ceiling mounting*

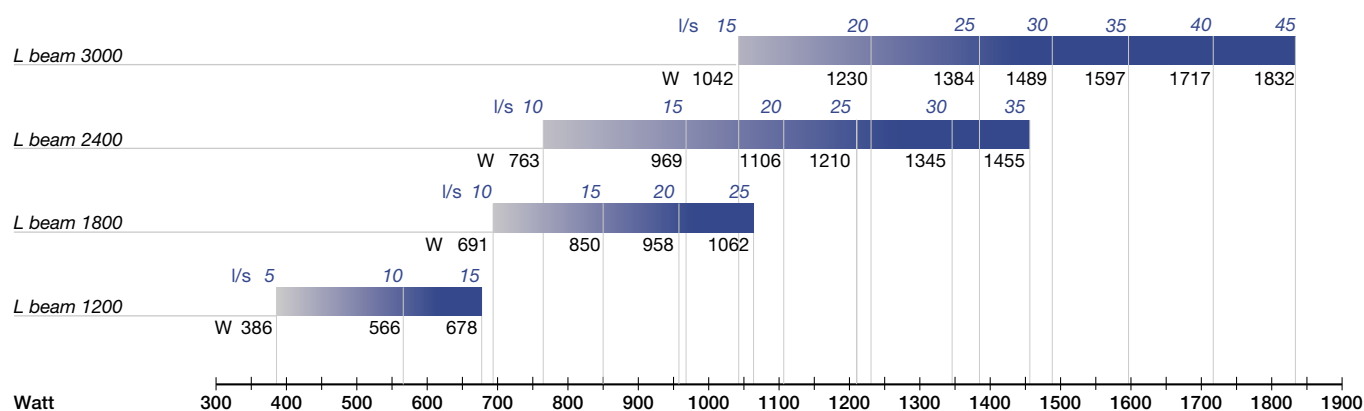
Product	IQIC
Construction material	Steel
Finishing	RAL 9010

Chilled induction beam suitable for ceiling mounting, in ceiling modules sized 600 x 600. The chilled beam is equipped with adjusting rails for the adjustment of air flow. 18 + 18 possible calibration positions, 3 possible air flow directions, two or one way or with different air percentages between the supply vanes.

IQIC beams are fitted with a patented sound attenuator to optimize noise performances. The device is positioned by the air supply duct. Bottom plate can be pushed aside to enable adjustment of capacity, as well as service and check-up. Made of galvanized sheet steel, RAL 9010

finishing white, air feeding joint  $\varnothing$  125 or 100 mm. Two- or four-tube coil with joints  $\varnothing$  15 mm. The beam is fitted with a pressure outlet accessible from the room, to enable the measurement of the air flow.

### Quick selection

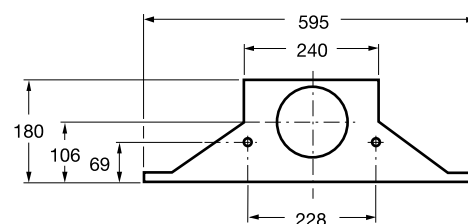
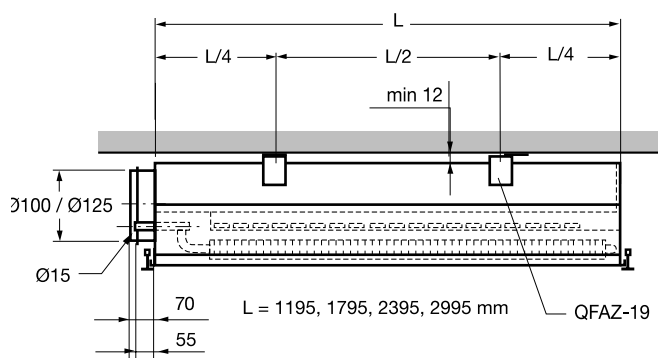


The above graphic representation refers to the following operating conditions.

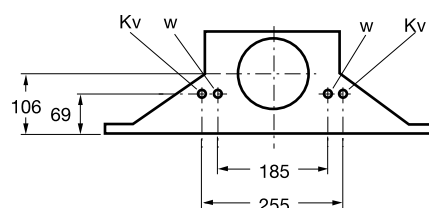
Other conditions can be verified by using the WinDon<sup>®</sup> calculation program. For more information contact our Technical Office, Conditioning Division.

Pressure drop air side	Pa	60
Water capacity	l/s	0,050
Temperature room air	°C	26
Temperature of supply air	°C	16
temperature inlet water	°C	15

### Size



kv = cooling water  
w = heating water



Size	Length	Weight
IQIC	mm	kg
120	1195	18
180	1795	25
240	2395	32
300	2995	39

Water volume cooling	0,50 l/m coil
Water volume heating	0,25 l/m coil

# IQIC

## chilled beam for ceiling mounting

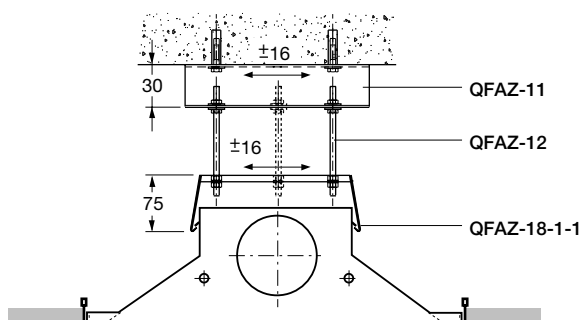
### Installation

Flexible hoses are used to make all air connections. We recommend mounting an iris damper to control the air flow. We recommend using fast-connection flexible hoses for the hydraulic connections

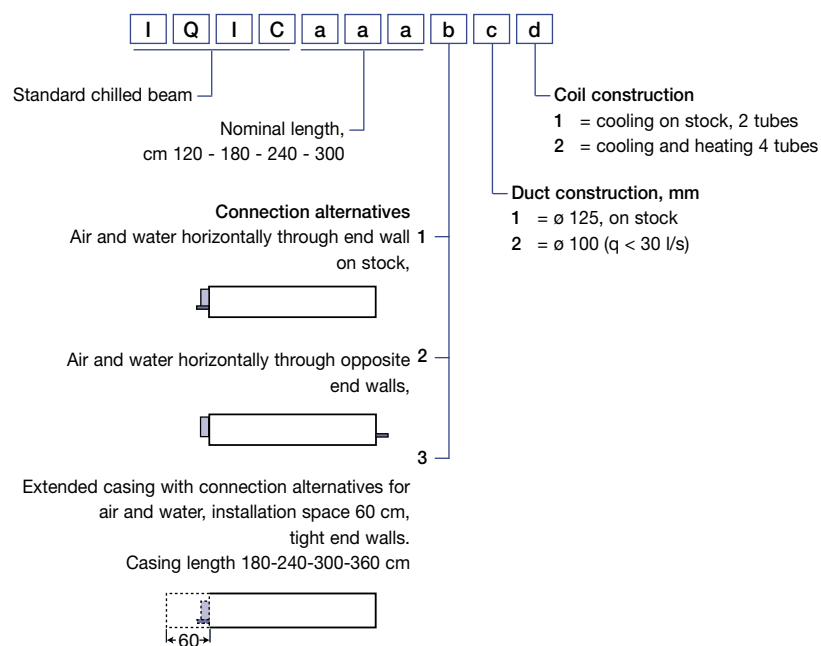
to prevent the transmission of vibrations coming from the hydraulic circuit to the chilled beam. This will avoid tension on the connections since they are not static connections and it will mean saving in labor.

*This is the standard installation.*

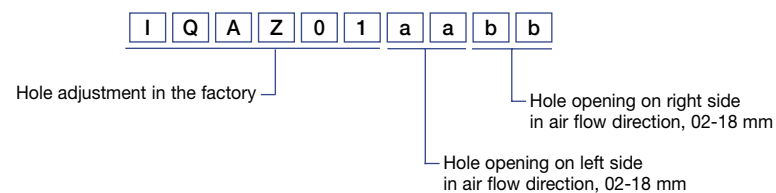
*For information on other installation methods, please contact our Technical Office, Conditioning Division.*



### How to order - Main code



### How to order - Accessory code



### Accessories

#### IQAZ - 11 - 1

Version protected during mounting  
Protective film on painted surfaces  
(The plastic protection for the duct and the tube openings is standard)

#### QFAZ - 19

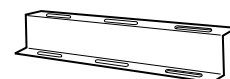
Attachment, unpainted

Set with 2 pcs 1 QFAZ-19 per beam



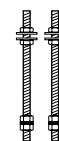
#### QFAZ - 11 - 1

Suspension brackets  
2 QFAZ-11-1 per beam



#### QFAZ - 12

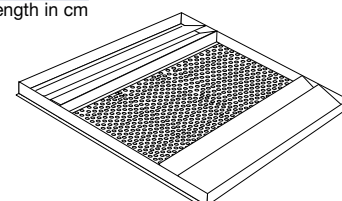
Suspension rods MS  
Set with 2 pcs. Length 500 mm  
2 QFAZ-12 per beam



#### IQBZ - 06 - aaa

Length in cm

Enclosure for false ceiling



#### IQAZ - 05

Gauge rod  
For hole length adjustment

