

# DASH - DUSH

## Floormaster step diffusers

Product	DASH	DUSH
Construction material	Galvanized steel	Galvanized steel
Finishing	RAL 9010	RAL 9010

The DASH and DUSH Floormaster diffuser distribution system is based on the pressure displacement principle with a low noise level, surrounding comfortable conditions and an effective ventilation. The system foresees the supply of air coming from the air conditioning system, directly in the area of the seat thus creating comfortable conditions all around.

### Material and superficial finishing

The diffusers are made of sturdy hot galvanized steel, SS 1151. The front grid has square holes. The device is powder painted in white, NCS 0502 Y, brightness 30, equivalent to RAL-9010. Other colors available at request.

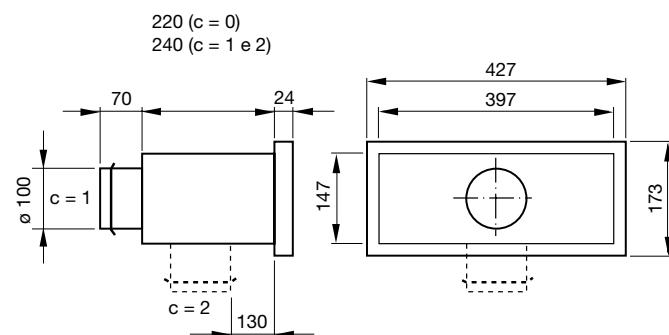
Powder painting gives a superficial clean appearance, sturdy and resistant against crashes. The deflectors and the diffuser cones are made of porous fabric.

### Applications

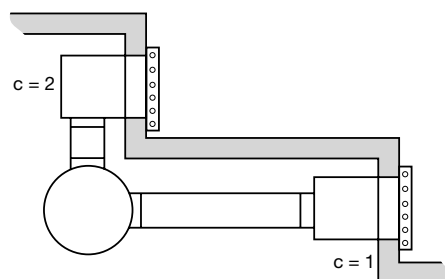
The DASH and DUSH Floormaster diffusers are suitable for meeting rooms, conference rooms, concert halls, theaters and cinemas. These terminals meet the requirements of this kind of environment.

### Size

#### DASH

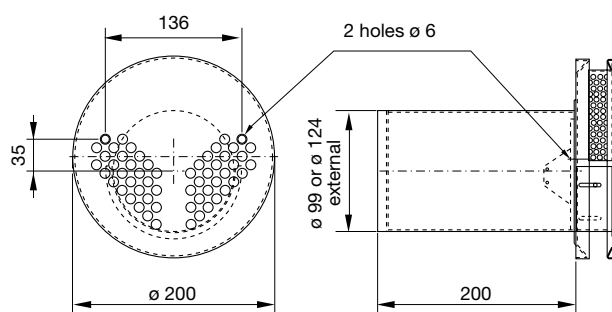


### Installation



### Size

#### DUSH



### Installation

