

PK

Nozzle diffusers

Product	PK
Construction material	Aluminium
Finishing	Natural anodized

The nozzle diffusers of the PK series allow medium and long airflow throws, with high induction, to condition or ventilate big areas.

They are made in aluminium, without any welded parts, and they have a fixed body that is installed on the duct of the wall using a round flange with felt gaskets and an adjustable nozzle that can rotate in any direction.

A knurled aluminium screw, projecting from the body and connected with an internal

adjusting damper, facilitates the control of the airflow out of the nozzle.

PK spot diffusers are very compact and sturdy; architects and designers appreciate their design.

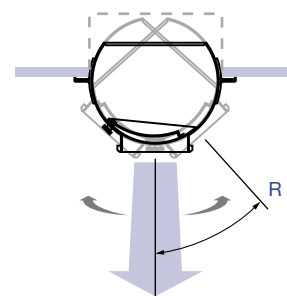
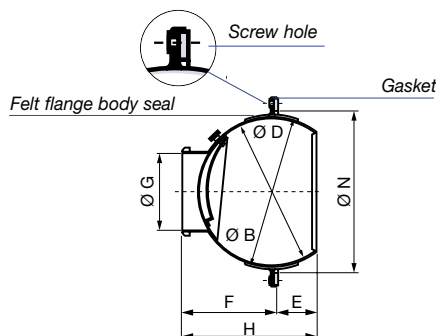
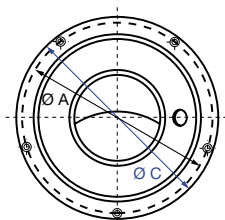
Application PK nozzle diffusers are suitable for installation in big areas, like theaters, sport centers, show rooms, trade fair halls, airports, etc. because their use incredibly reduces the use of ducts for the distribution of air, hence reduces costs and

construction times. The possibility of precisely adjusting the air flow and its rate allows to reach positive air distribution conditions in the room.

Installation PK nozzle diffusers can be installed very easily, by making appropriate round openings on the wall of the duct. They are fixed on the duct with screws through the holes on the fixing flange. They can be installed vertically or horizontally.

Size

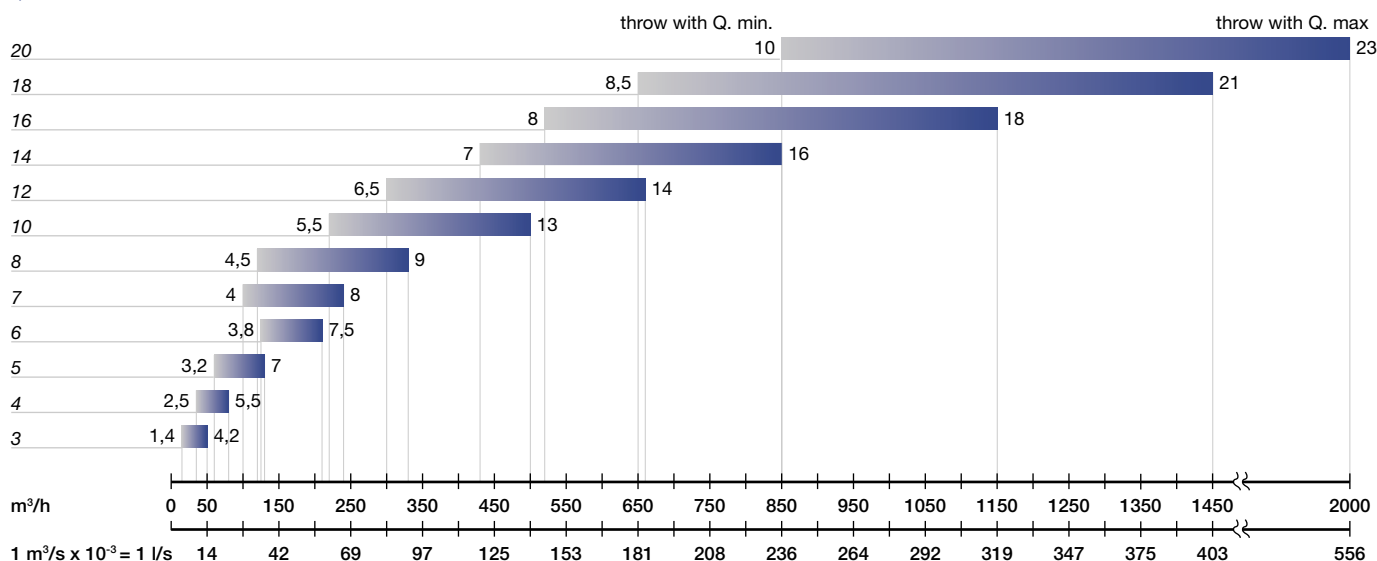
Size	Sizes (mm)									Weight gr	Holes screws	R * (°)
	ø A	ø B	ø C	ø D	E	F	ø G	H	ø N			
3	97	75	115	82	17	53	38	70	85	130	3	33
4	122	100	140	107	24	65	50	89	110	180	4	41
5	152	130	170	137	33	82	65	115	140	340	5	42
6	172	150	190	158	38	94	76	132	160	370	5	43
7	213	178	231	185	38	111	90	149	190	460	5	42
8	232	200	250	204	44	120	100	164	208	580	5	42
10	304	267	324	276	50	174	140	224	280	950	5	40
12	342	305	363	314	63	200	165	263	318	1180	5	39
14	342	305	363	314	60	185	190	245	318	1180	5	20
16	451	410	470	419	92	248	230	340	425	2000	8	40
18	511	470	535	479	95	295	260	390	486	2630	8	38
20	511	470	535	479	95	295	310	390	486	2730	8	34



PK

nozzle diffusers

Quick selection



The air flow rates and the pressure drop rates are certified according to the UNI 8728 and prEN 12238 standards, by an independent and certified body, in compliance with the legislation in force on energy saving standards.

	Q min.	Q max
NR	< 20	< 30
Pressure drop Pa	15	70



PKP

Multiple nozzle diffusers

Multiple diffuser, with up to four nozzles with just one duct opening

Models	Duct size	Quantity per type	Sizes (mm)							R * (°)
			A	B	C	D	E	F	G	
PKP										
32-204	250 x 100	PK 3 x 2	304	152	280	127	152	57	48	33
42-126	304 x 152	PK 4 x 2	355	204	330	178	178	74	37	41
52-146	355 x 152	PK 5 x 2	406	204	380	178	204	90	52	44
62-168	406 x 204	PK 6 x 2	457	250	432	229	229	180	62	43
34-1010	250 x 250	PK 3 x 4	304	304	280	280	127	57	48	33
44-1212	304 x 304	PK 4 x 4	355	355	330	330	152	74	37	41
54-1414	355 x 355	PK 5 x 4	406	406	380	380	178	90	52	44
64-1616	406 x 406	PK 6 x 4	467	457	432	432	204	180	62	43
74-1818	457 x 457	PK 7 x 4	508	508	483	483	237	92	52	43
84-2020	508 x 508	PK 8 x 4	560	560	534	534	250	92	52	33

