



## WS 400

Square diffusers with swirl throws

Product	WS 400
Construction material	Steel
Finishing	RAL 9010

WS 400 diffusers distribute air through high induction swirl throws. They are also fitted with fixed vanes, stamp-formed, which are perfectly suitable both for cooling and heating systems.

These diffusers are suitable for either ceiling or exposed duct installation.

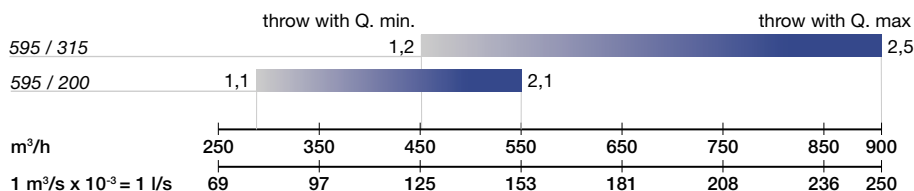
These diffusers have a high induction rate which produces a quick balancing of the temperatures between supply air and room air temperature. WS 400 diffusers can operate in plants with both constant or variable air flow rates.

They can also be used for air extraction procedures. The diffusers are fitted with galvanized sheet steel plenum with perforated equalizing sheet, with round, side or upper connections and adjustable damper. The diffuser is made in sheet steel, with epoxy white powder coating (RAL 9010), and it is fixed to the plenum with a central screw. WS 401 TI – WS 401 SI version insulated internally with polyethylene thickness 6 mm. CI1.

**Applications** WS 400 diffusers are used in all the systems of tertiary facilities which require optimal air distribution performances, without air drafts or cold air drafts. Since it can operate with variable air flow rates it can be used in systems with advanced technological features and performances.

**Installation** WS 400 diffusers are mounted using 4 mounting brackets on the plenum, with threaded bars. The installation can also be made in modular ceilings.

### Quick selection

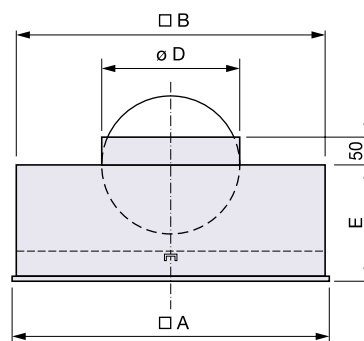


	Q min.	Q max
NR	< 25	< 35
Pressure drop Pa	10	< 30

### Size

Size	Sizes (mm)				
	□ A	□ B	C	E	ø D
595 / 200	595	355	305	200	198
595 / 315	595	555	420	260	313

WS 401 T  
WS 401 TI



WS 401 S  
WS 401 SI

