

TAB 01 - TAB 02

Swirl diffusers

Product	TAB 01	TAB 02
Construction material	Galvanized steel	Aluminium
Finishing	RAL 9010	RAL 9010

The swirl diffusers of the TAB series provide an excellent distribution of the air in residential and industrial facilities, optimizing the residual speed of the air thanks to the rotation of the blades around the axis. These diffusers come in two different versions for two different fields of applications:

- TAB 01: for industrial plants where the installation is required to be very high, with 6 galvanized steel radial blades, individually adjustable. The finishing is white (RAL 9010).
- TAB 02, smaller, for residential areas, with normal heights. Natural aluminium body, with 6 steel radial blades,

individually adjustable, with vertical adjustment of the central core. The finishing is white (RAL 9010).

The diffusers allow to change the inclination of the blades in order to change the characteristics of the air flow in the room. Furthermore, mod. TAB 02, offers the possibility of lowering or raising the diffuser core to increase or decrease the induction rates. TAB 01 version with electrical adjustment

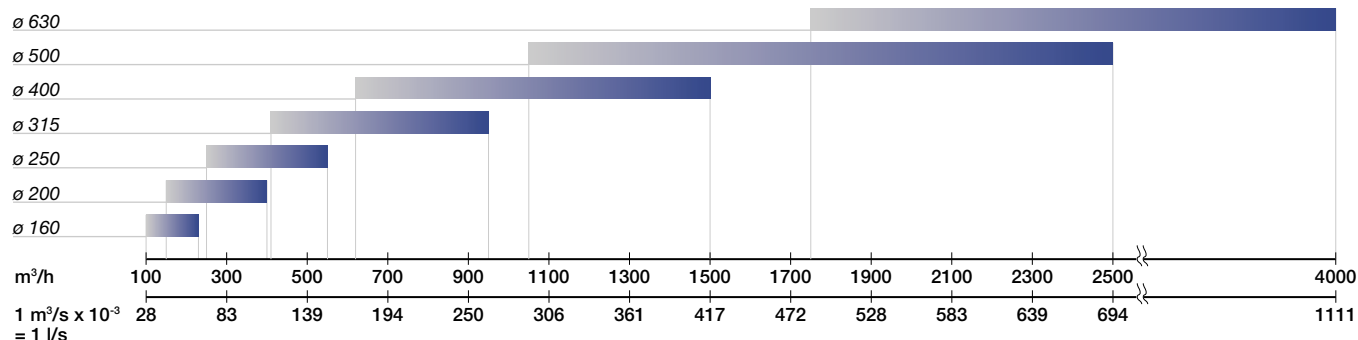
Applications Mod. TAB 01 can be used in industrial plants with high ceilings (> 4 m.) and in other similar areas (swimming-pools, shopping centers, sport centers). Mod. TAB 02 is suitable for civil facilities

(banks, cinemas, theaters, offices, etc.); however, it can be applied in big areas like shopping centers, show rooms, etc.

Installation TAB series diffusers are installed by using the screws on the neck of the diffuser. The diffusers are suitable for either ceiling and exposed ductwork installation.

- They can be installed as follows:
- by using specific AK connection Plenum (on request with damper mod. BAT)
 - installation on rigid duct
 - installation on joint with flexible or rigid duct.

Quick selection

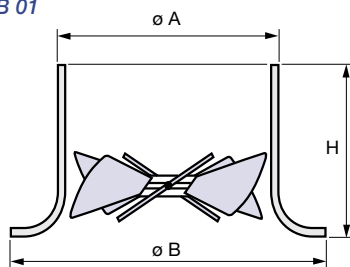


The air flow rates and the pressure drop rates are certified according to the UNI 8728 and prEN 12238 standards, by an independent and certified body, in compliance with the legislation in force on energy saving standards.

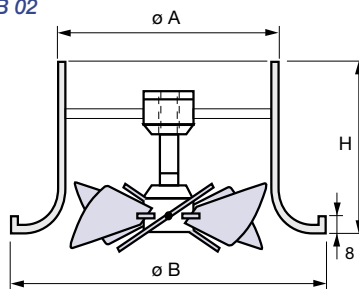
	Q min.	Q max
NR	< 25	< 35
Pressure drop Pa	10	< 30

Size

TAB 01



TAB 02



Size Sizes (mm)

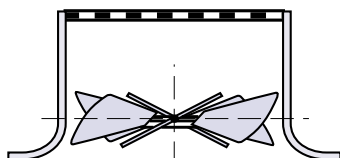
TAB 01	ø A	ø B	H
250	253	330	140
315	318	415	175
400	403	526	223
500	503	660	280
630	633	830	355
TAB 02			
160	157	220	95
200	199	275	110
250	253	345	130

Accessories

TAB 01 - TAB 02 swirl diffusers

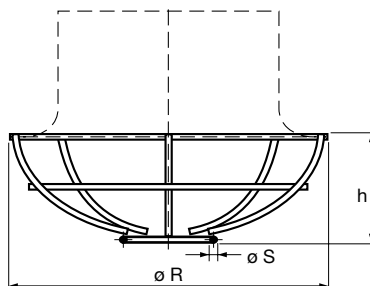
EQ Equalizer

Perforated plate, supplied separately or assembled to the diffuser, if required.



BS protection grille

only for TAB 01)



It is required in areas such as gyms, where you need to protect the diffuser.

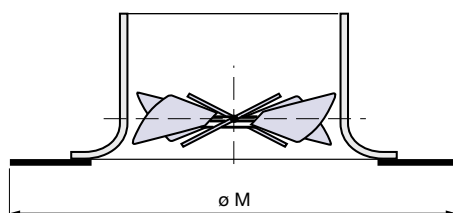
Size Sizes (mm)

	ø R	ø S	h
250	330	6	130
315	415	6	140
400	525	6/8	150
500	660	6/8	165
630	830	6/8	180

Collar S1

only for TAB 01)

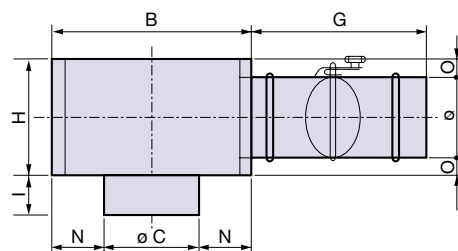
It is used to create a supporting area at the starting point of the air flow, if the ceiling is not available.



Size Sizes (mm)

	ø M
315	580
400	750
500	905
630	1150

BAT - BAT I



AK - AK I

BAT - BAT I Plenum

AK connecting plenum (standard type): it is used when the air feeding duct is not suitable.

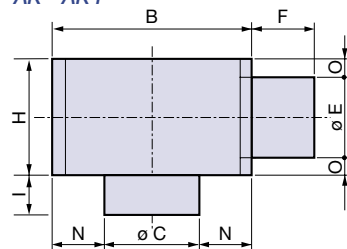
Aki Insulated type with 6 mm, Class 1 polyethylene.

BAT with butterfly-type adjusting damper and manual command for external adjustment.

Size

Sizes (mm)

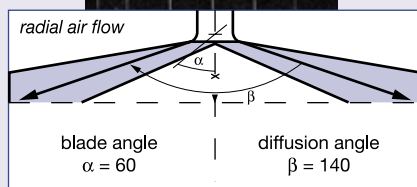
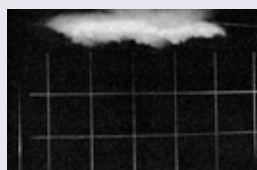
AK - AK I



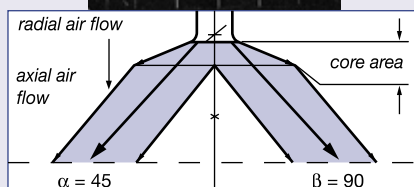
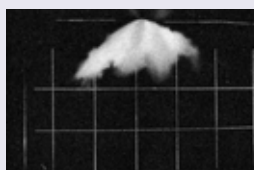
	B	H	ø C	I	ø E	ø	G	F	N	O
160	315	180	151	60	125	123	280	100	82	27.5
200	350	220	193	100	160	158	280	100	78.5	30
250	400	260	244	120	200	198	280	150	76.5	30
315	480	310	312	120	250	248	280	150	84	30
400	550	380	397	150	315	313	380	200	76.5	32.5
500	650	460	497	190	400	398	380	200	76.5	30
630	800	560	627	240	500	498	380	200	86.5	30

Air flow pattern according to the blade angle

COOLING



ISOTHERM



HEATING

