

BE

Omnidirectional diffusers with curve-shaped blades

Product	BE
Construction material	Aluminium
Finishing	Natural anodized

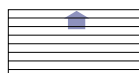
The BE series ceiling diffusers with curve-shaped adjustable blades provide horizontal or vertical air distribution, depending on the position of the blade. This is a precious advantage for creating a pleasant environment for the people in a room. They are manufactured from extruded aluminium,

anodized and satin finished in natural aluminium.

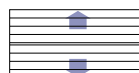
Applications Curve-shaped diffusers, can be installed in small or medium residential conditioning systems, and light commercial facilities.

Installation These diffusers can be installed with a few simple operations. The BE series is installed by using hidden screws and counter-frame, or by visible screws for the BF type.

BE - BF
100



BE - BF
200



BE - BF
300

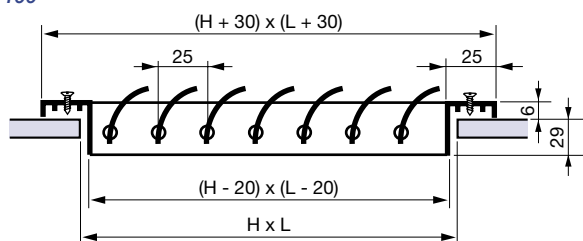


BE - BF
400

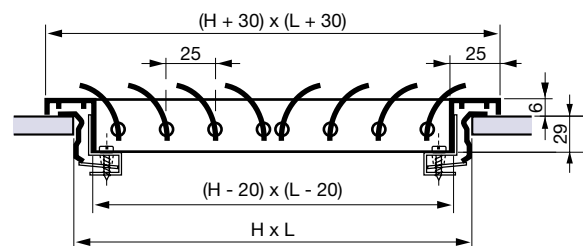


Size

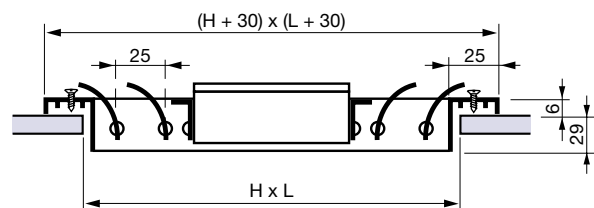
BF 100



BE 200 + GR 001



BF 300 - BF 400



Acceptable measures

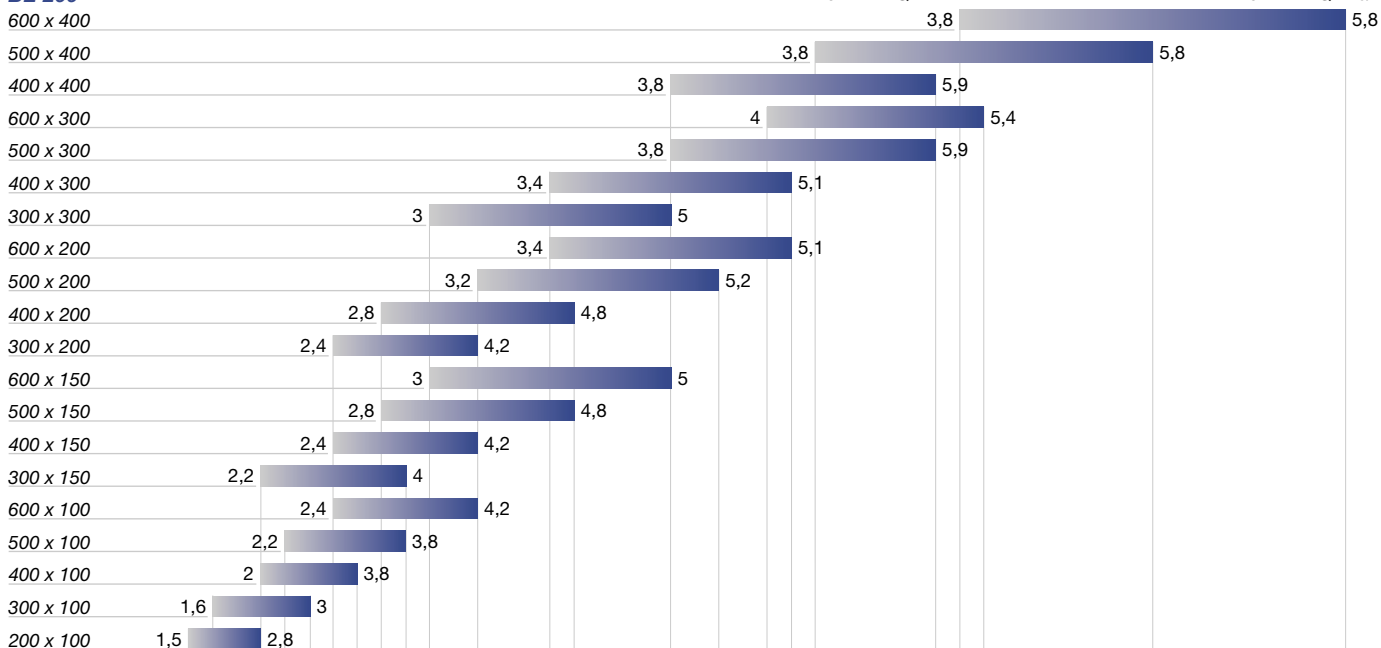
Height H (mm)	Width (mm) L					
	150	200	250	300	400	600
100	---	•	•	•	•	•
150	•	•	•	•	•	•
200	---	•	•	•	•	•
300	---	---	---	•	•	•
400	---	---	---	---	•	---
500	---	---	---	---	---	---
600	---	---	---	---	---	---

BE

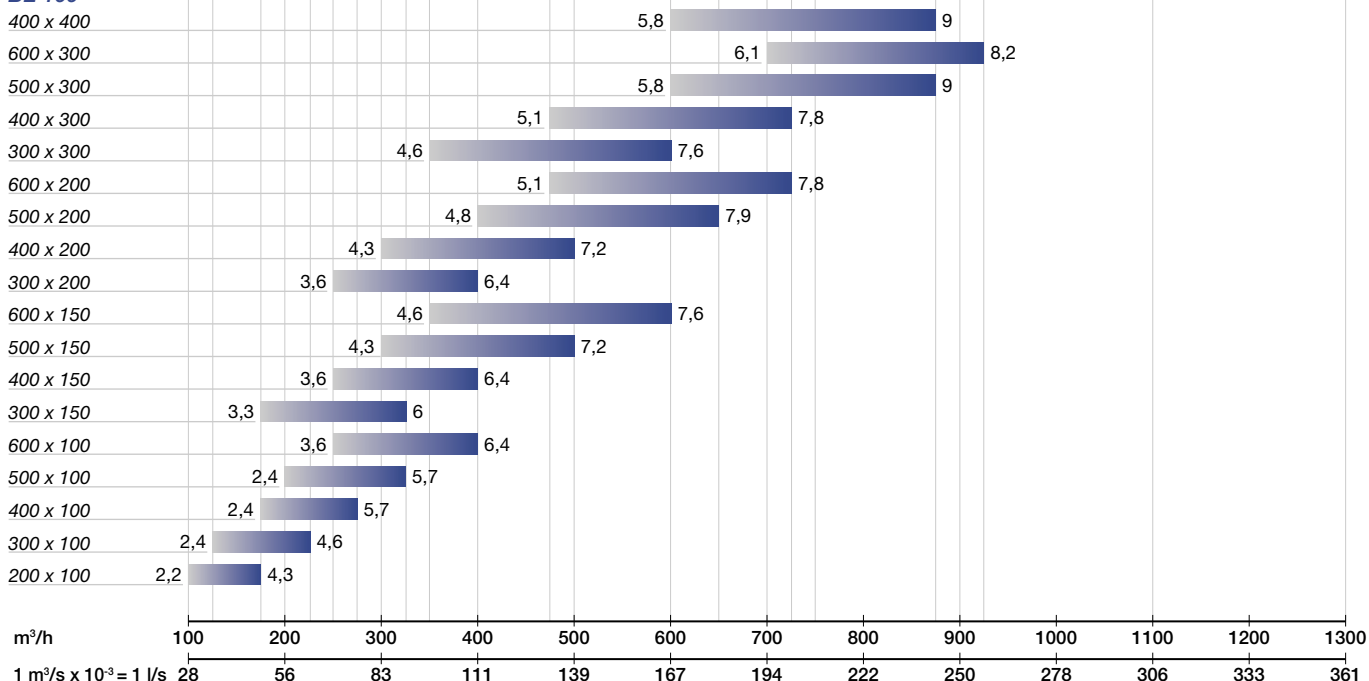
omnidirectional diffusers with curve-shaped blades

Quick selection

BE 200



BE 100



	Q min.	Q max
NR	< 20	< 35
Pressure drop Pa	< 5	< 30

Accessories

Plenum BPS

Feeding plenum:
galvanized steel sheet mod. BP

For dimensions and prices
see technical sheet
AD 130 - GF 130

