



# CV 100 - DE 100

*Circular diffusers with adjustable cones*

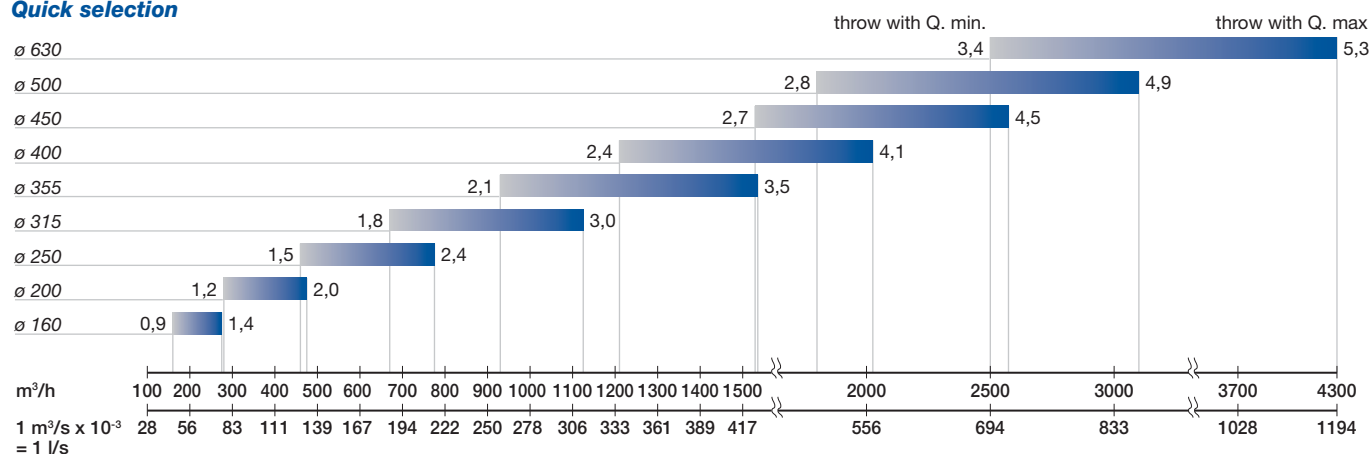
Product	CV 100	DE 100
Construction material	Aluminium	Steel
Finishing	RAL 9010	RAL 9010

CV 100 and DE 100 diffusers with adjustable cones are suitable for either ceiling and exposed ductwork installation, providing an adjustable air distribution, horizontally under cooling conditions and vertically under heating conditions. All you need to do is adequately adjust the height of the central cones in relation to the most external cone. The diffusers have a five step adjusting for the internal cones, in order to choose the most suitable position for operating conditions and the comfort of the people.

**Applications** The diffusers are generally installed in conditioning systems of medium and big tertiary facilities: shopping centers, banks, conference rooms, cinemas, theaters, big stores, big restaurants, offices, etc. They assure a uniform distribution of air in the room without creating air flows and are very silent.

**Installation** The diffusers are fixed either with screws on the diffuser neck sides or by hangers from the ceiling. Optional accessories include: dampers DT 012, DT 003, DT 006, and the feeding plenums DPS and DPS-I. The dampers are installed in the duct and can be adjusted from the external part of the diffuser.

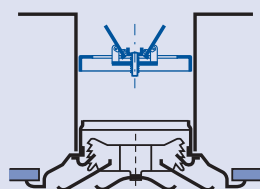
## Quick selection



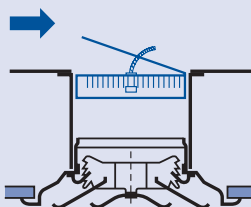
The air flow rates and the pressure drop rates are certified according to the UNI 8728 and prEN 12238 standards, by an independent and certified body, in compliance with the legislation in force on energy saving standards.

	Q min.	Q max
NR	< 25	< 35
Pressure drop Pa	10	< 30

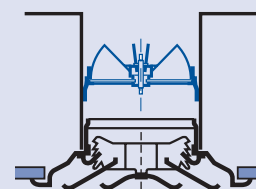
### Connection with DT 012 damper



### Connection with DT 006 damper



### Connection with DT 003 damper

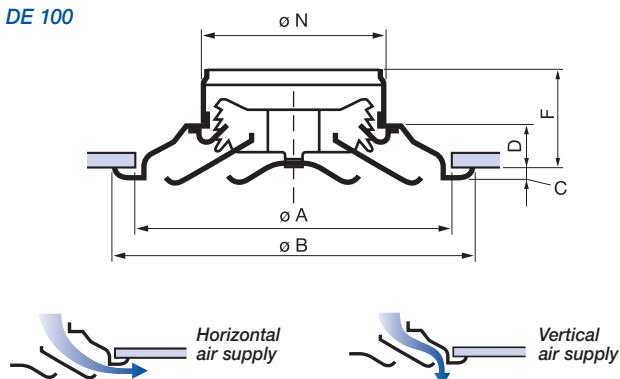


## CV 100 - DE 100

circular diffusers with adjustable cones

### Size

#### DE 100

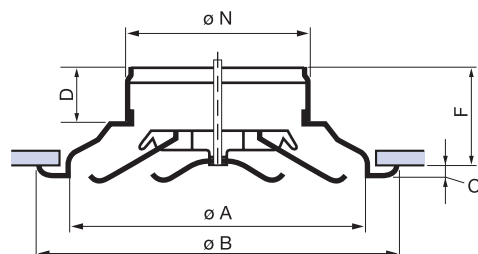


#### Size

#### Sizes (mm)

	$\phi A$	$\phi B$	C	D	F	$\phi N$
160	279	323	12	35	85	158
200	375	428	10	51	101	198
250	467	538	14	67	117	248
315	557	635	10	85	135	313
355	648	743	18	96	146	355
400	740	856	14	116	166	400
450	832	970	14	135	185	450
500	924	1081	17	149	199	500
630	1103	1286	18	182	232	630

#### CV 100



#### Size

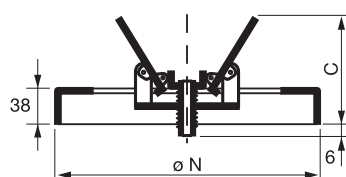
#### Sizes (mm)

	$\phi A$	$\phi B$	C	D	F	$\phi N$
160	286	352	10	35	66	158
200	372	452	10	35	89	198
250	466	569	10	45	120	248
315	564	673	10	45	135	313

## Accessories

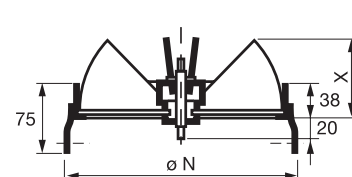
### Damper DT 012

Butterfly type, adjustable from the diffuser face. Installation on the duct through side screws.



### Damper DT 003

Opposed multiple blades, adjustable micron.



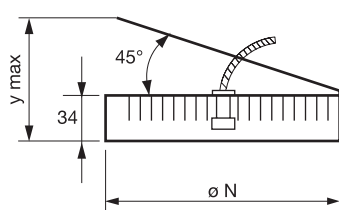
#### Size

#### Sizes (mm)

$\phi N$	C	X	Y max
160	106	55	130
200	126	69	165
250	151	89	200
315	183	109	235
355	-	124	-
400	-	139	-
450	-	157	-
500	-	175	-
630	-	221	-

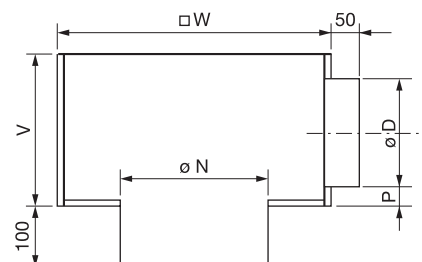
### Damper DT 006

Flag type, fitted with equalizing grid.



### DPS Plenum

Distribution plenum made in galvanized steel with circular side connection without damper.



### DPS-I Plenum

Plenum (c.s.d.) with class 1, 6 mm thick internal polyethylene insulation without damper.

#### Size

#### Sizes (mm)

	$\phi N$	$\square W$	P	$\phi D$	V
160	160	345	31	123	185
200	200	395	31	158	220
250	250	470	36	198	270
315	315	520	31	248	310