

HT 333

Fire dampers REI 120

Product	HT 333
Construction material	Steel
Finishing	Electrolytic galvanized

HT 300 fire dampers are REI 120 certified and prevent the spreading of smoke and flames in air circuits, thus offering high protection for people and things. HT 300 dampers have just one blade, in inert material completely incombustible, reinforced on both of the longer sides by a U-shaped sheet profile.

The body is made of strong galvanized steel sheet and it is fitted with flanges on the two ends used for the connection to the ducts. The spring thermal release device is engaged by a fuse in the frame which melts at a temperature of 72 °C, thus allowing

the torsion spring to close the blade, where it is held into place by an automatic stop device.

On request the fire dampers are supplied with thermal-electric release devices: the electric servo control brings the damper in stand-by position and at the same time loads the return spring.

If the power supply is interrupted, the servo motor brings the damper in safety position thanks to the energy accumulated by the spring. The thermal fuse Tf1 is engaged if the room temperature exceeds 72 °C. The Tf 2 thermal fuse, which can be replaced,

is engaged when the temperature inside the duct exceeds 72 °C. When the fuse is engaged the supply line is irreversibly interrupted.

HT 300 dampers have been tested according to the fire resistance procedures laid out by directive n. 91 of the Ministry for the Interior, with certifications of the Ministerial Ordinance 11/30/83 and by VHI 7678.

Installation To guarantee a correct operation of the damper, the rotation axis of the blade must always be horizontal.

Hight (mm) H	200	300	400	500	600	700	800	900	1000	1100	1200	1300	1400	1500	1600	1700	1800	1900	2000
Width (mm) W																			
200	•	•	•	•	•	•	•	•	•	•	•	•	•	•	•	•	•	•	•
300	•	•	•	•	•	•	•	•	•	•	•	•	•	•	•	•	•	•	•
400	•	•	•	•	•	•	•	•	•	•	•	•	•	•	•	•	•	•	•
500	•	•	•	•	•	•	•	•	•	•	•	•	•	•	•	•	•	•	•
600	•	•	•	•	•	•	•	•	•	•	•	•	•	•	•	•	•	•	•
700	•	•	•	•	•	•	•	•	•	•	•	•	•	•	•	•	•	•	•
800	•	•	•	•	•	•	•	•	•	•	•	•	•	•	•	•	•	•	•
900	•	•	•	•	•	•	•	•	•	•	•	•	•	•	•	•	•	•	•
1000	•	•	•	•	•	•	•	•	•	•	•	•	•	•	•	•	•	•	•

Price increase of 13% for dampers with frame with depth up to 500 mm

Dampers with height over 1000 mm are made of 2 dampers mounted on a single frame (2 blades version).

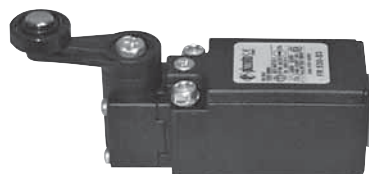
Example how to obtain the price: requested HT 333 - 1500 x 1200 = n° 2 HT 333 - 1500 x 600 + 10% increase.

Two blades version is provided with double controls and accessories (micro, actuators, etc.)

On request versions with intermediate dimensions by 50 to 50 mm are available.

Dampers ready at stock are complete with microswitch non included in the indicated price.

Accessories for dampers



Electric microswitch



Fuse

Description

Electric microswitch with double contact
on - off - Protection IP 66

Spare fuses

Fuse 72 °C, standard

Fuse 96 °C, upon request

HT 333

fire dampers REI 120

Electric actuators (IP54)

Model	Description	Power input W	
		to open	to stay open
BLF 24 T	Thermal/electric release + 2 micro with spring return (up to 0,25 mq approx)	5	2,3
BF 24 T	Thermal/electric release + 2 micro with spring return	7	2
BF 24	With spring return 24 V + 2 micro	7	2
BLF 230 T	Thermal/electric release + 2 micro with spring return (up to 0,25 mq approx)	5	3
BF 230 T	Thermal/electric release + 2 micro with spring return	8	3
BF 230	With spring return 220 V + 2 micro	8	3

Magnets

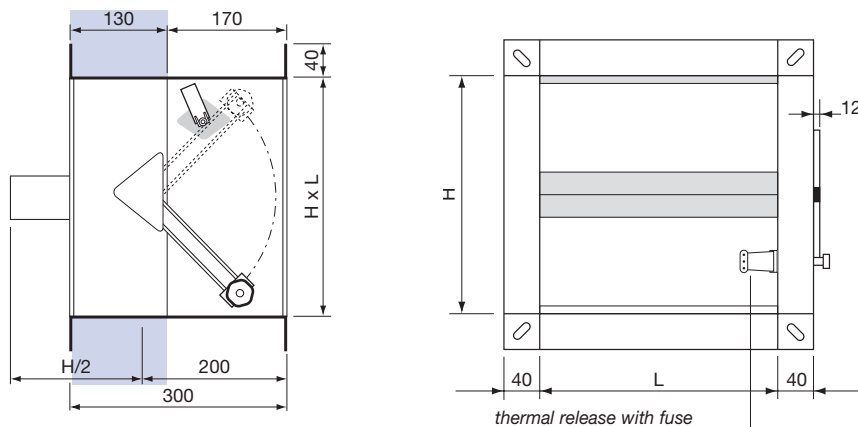
Model	Description
E 1	Thermal/electric control with magnet and thermal contact breaker locked with the magnet through electric contact, power supply 220 V approx. normally energized
E 3	C.S. with 24 V power supply approx. normally energized
E 5	Magnet with power supply 220 V approx. normally energized (without thermal contact breaker)
E 6	Magnet with power supply 220 V approx. normally not energized (without thermal contact breaker)
E 7	Magnet with power supply 24 V approx. normally energized (without thermal contact breaker)
E 8	Magnet with power supply 24 V approx. normally not energized (without thermal contact breaker)

For above mentioned magnets the power input is 9 W.

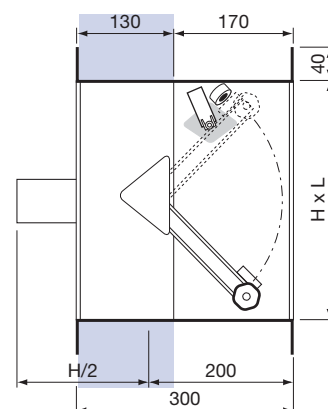
Actuators and magnets cannot be used on base version fire dampers (fuse + manual reset).

Size

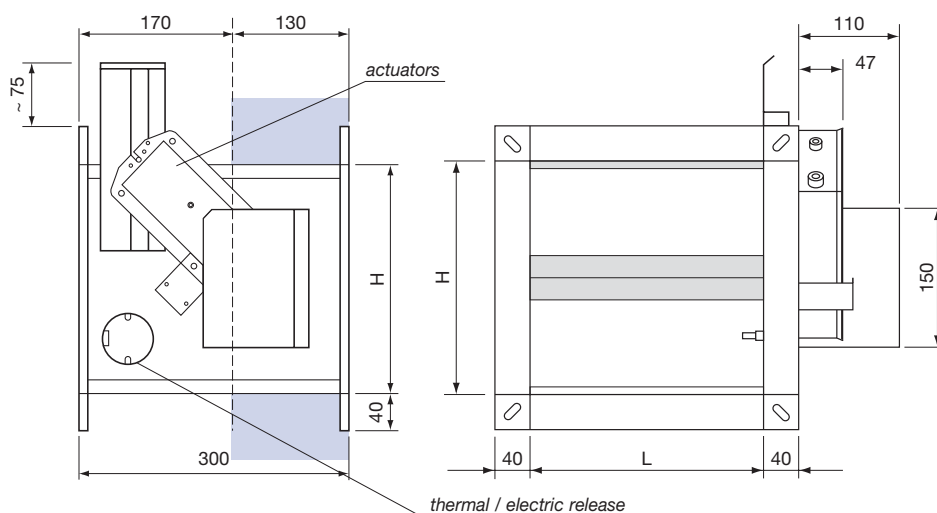
HT 333 standard with manual reset and microswitch



HT 333 + magnet c.s.



HT 333 + electric actuators



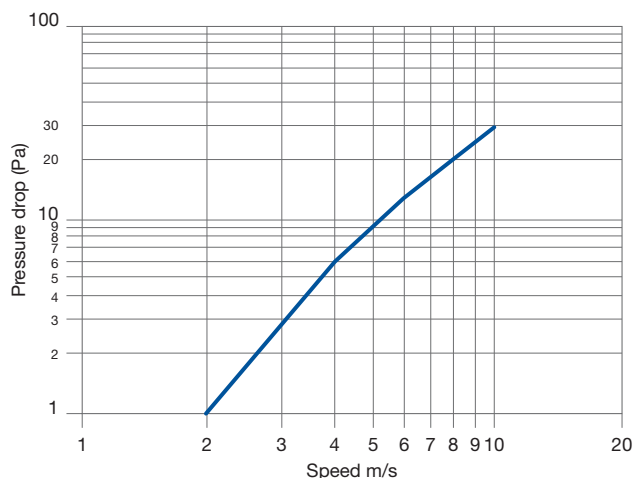
W x H = Nominal size

The double blade structure includes:
double controls and relevant
accessories

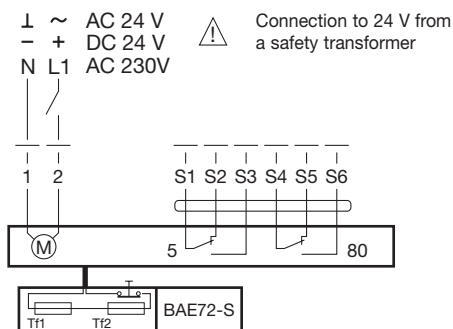
ON REQUEST
we can also supply intermediate
sizes 50 and 55 mm.

Diagram for the detrmination of pressure drops

The air flow rates and the pressure drop rates are certified according to the UNI 8728 and pr EN 12238 standards, by an independent and certified body, in compliance with the legislation in force on energy saving standards.



Connection diagram BLF 24-T BF 24-T BLF 230-T BF 230-T



BLF230-T, BF230-T

For power supply interruption foresee a section device for all phases (minimum contact open 3 mm).

Possibility of connecting more than one servo motors in parallel.
Take into account the power data.

